

**CD49e Antibody (C-term)**  
**Purified Rabbit Polyclonal Antibody (Pab)**  
**Catalog # AP2876b****Specification**

---

**CD49e Antibody (C-term) - Product Information**

Application	FC, WB,E
Primary Accession	<a href="#">P08648</a>
Reactivity	Human, Mouse
Host	Rabbit
Clonality	Polyclonal
Isotype	Rabbit IgG
Calculated MW	114536
Antigen Region	796-824

**CD49e Antibody (C-term) - Additional Information****Gene ID** 3678**Other Names**

Integrin alpha-5, CD49 antigen-like family member E, Fibronectin receptor subunit alpha, Integrin alpha-F, VLA-5, CD49e, Integrin alpha-5 heavy chain, Integrin alpha-5 light chain, ITGA5, FNRA

**Target/Specificity**

This CD49e antibody is generated from rabbits immunized with a KLH conjugated synthetic peptide between 796-824 amino acids from the C-terminal region of human CD49e.

**Dilution**

FC~~1:10~50

WB~~1:1000

E~~Use at an assay dependent concentration.

**Format**

Purified polyclonal antibody supplied in PBS with 0.09% (W/V) sodium azide. This antibody is prepared by Saturated Ammonium Sulfate (SAS) precipitation followed by dialysis against PBS.

**Storage**

Maintain refrigerated at 2-8°C for up to 2 weeks. For long term storage store at -20°C in small aliquots to prevent freeze-thaw cycles.

**Precautions**

CD49e Antibody (C-term) is for research use only and not for use in diagnostic or therapeutic procedures.

**CD49e Antibody (C-term) - Protein Information****Name** ITGA5 ([HGNC:6141](#))

## Synonyms FNRA

**Function** Integrin alpha-5/beta-1 (ITGA5:ITGB1) is a receptor for fibronectin and fibrinogen. It recognizes the sequence R-G-D in its ligands. ITGA5:ITGB1 binds to PLA2G2A via a site (site 2) which is distinct from the classical ligand-binding site (site 1) and this induces integrin conformational changes and enhanced ligand binding to site 1 (PubMed:[18635536](#), PubMed:[25398877](#)). ITGA5:ITGB1 acts as a receptor for fibrillin-1 (FBN1) and mediates R-G-D-dependent cell adhesion to FBN1 (PubMed:[12807887](#), PubMed:[17158881](#)). ITGA5:ITGB1 acts as a receptor for fibronectin (FN1) and mediates R-G-D-dependent cell adhesion to FN1 (PubMed:[33962943](#)). ITGA5:ITGB1 is a receptor for IL1B and binding is essential for IL1B signaling (PubMed:[29030430](#)). ITGA5:ITGB3 is a receptor for soluble CD40LG and is required for CD40/CD40LG signaling (PubMed:[31331973](#)).

## Cellular Location

Cell membrane; Single-pass type I membrane protein. Cell junction, focal adhesion

## Tissue Location

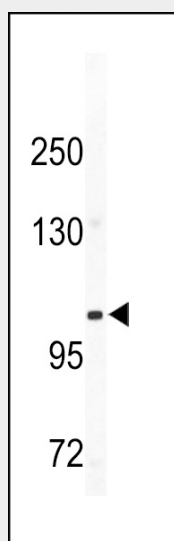
Expressed in placenta (at protein level).

## CD49e Antibody (C-term) - Protocols

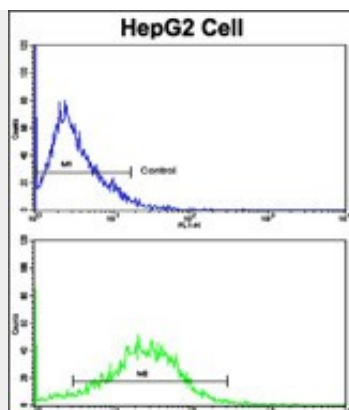
Provided below are standard protocols that you may find useful for product applications.

- [Western Blot](#)
- [Blocking Peptides](#)
- [Dot Blot](#)
- [Immunohistochemistry](#)
- [Immunofluorescence](#)
- [Immunoprecipitation](#)
- [Flow Cytometry](#)
- [Cell Culture](#)

## CD49e Antibody (C-term) - Images



Western blot analysis of CD49e antibody (C-term) (Cat.# AP2876b) in mouse bladder tissue lysates (35ug/lane). CD49e (arrow) was detected using the purified Pab.



Flow cytometric analysis of HepG2 cells using CD49e Antibody (C-term)(bottom histogram) compared to a negative control cell (top histogram). FITC-conjugated goat-anti-rabbit secondary antibodies were used for the analysis.

### **CD49e Antibody (C-term) - Background**

CD49e belongs to the integrin alpha chain family. Integrins are heterodimeric integral membrane proteins composed of an alpha chain and a beta chain. This protein is the integrin alpha 5 chain. Alpha chain 5 undergoes post-translational cleavage in the extracellular domain to yield disulfide-linked light and heavy chains that join with beta 1 to form a fibronectin receptor. In addition to adhesion, integrins are known to participate in cell-surface mediated signalling.

### **CD49e Antibody (C-term) - References**

- Boehmle, A.M., J. Immunol. 182 (11), 6789-6798 (2009)
- Okazaki, T., Am. J. Pathol. 174 (6), 2378-2387 (2009)
- Schornberg, K.L., Proc. Natl. Acad. Sci. U.S.A. 106 (19), 8003-8008 (2009)